

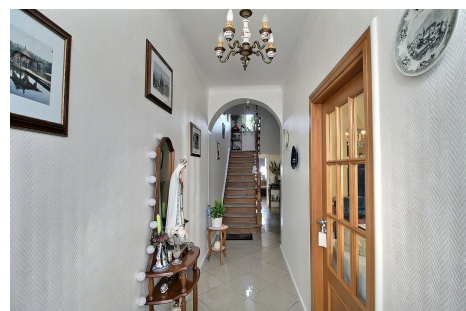
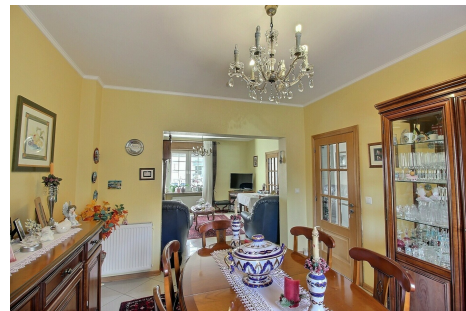
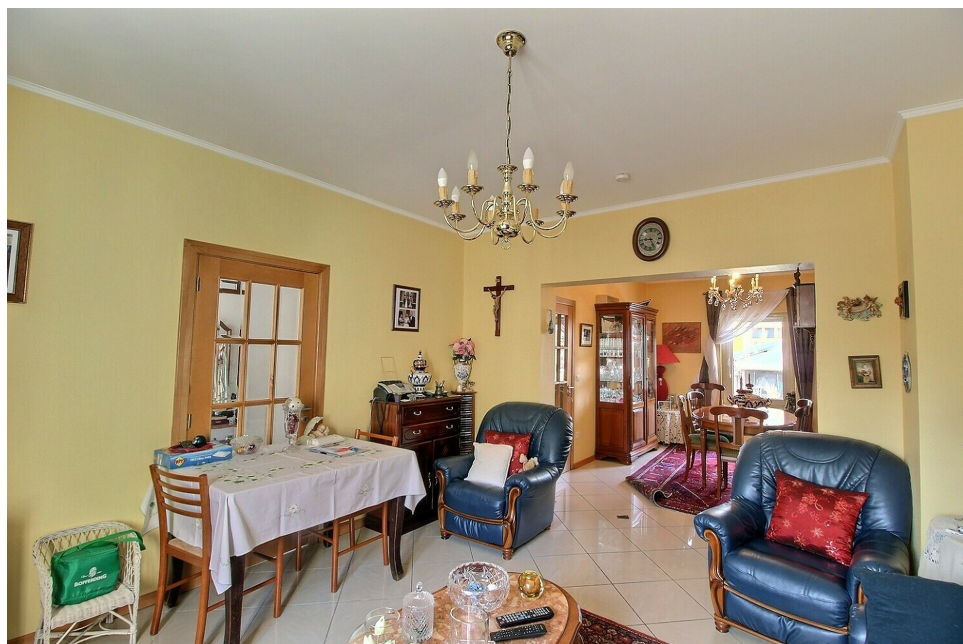


Twin house

170m² 4 Bedroom(s)

Bascharage

790 000€



DESCRIPTION

House Dream is pleased to exclusively offer this charming detached house with a total surface area of 170 m², including approx. 130 m² of living space, set on 2.38 ares of land. Located in Bascharage, this property benefits from a quiet, leafy setting, offering its occupants a privileged quality of life. Close to all amenities (supermarkets, crèches, schools, parks, restaurants), this home is perfectly served by public transport, just 26 minutes from Luxembourg City and Kirchberg, with rapid access to motorways. First floor: Spacious entrance hall Bright 33 m² living room 4 m² storeroom 16 m² semi-open fitted kitchen with access to terrace and garden Adjoining 10 m² dining room 1.5 m² separate WC 1st floor : 7 m² landing Two bedrooms, 14 m² and 13 m² respectively 6 m² shower room (shower, washbasin, WC) 2nd floor : 7 m² landing Two additional bedrooms to renovate, offering great design potential Basement: Cellar ± 15 m² including boiler room and laundry room Exterior Terrace ± 18 m², partially covered by...

ENERGY PASS

CHARACTERISTICS

Number of pieces : 7

Nb. chamber (s) : 4

Area : 170m²

Nb. of bathrooms : 1

Equipped kitchen : Oui



House dream



14/16 rue Michel Rodange L-2430



27 77 00 78



contact@housedream.lu



<https://www.housedream.lu/en/detail-1105>