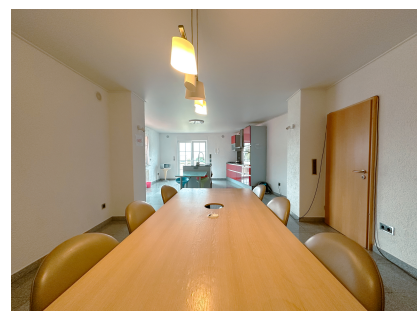




## Terraced house

205m<sup>2</sup> 6 Bedroom(s)  
petange

850 000€

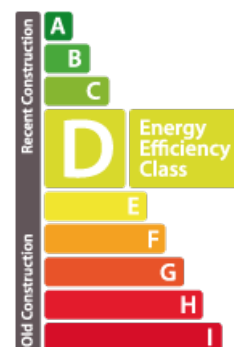


### DESCRIPTION

Exceptional opportunity for investors or large families! Ideal for an investor or a large family: Interesting rental investment with a monthly return of €5370/month. House Dream is the exclusive real estate agency offering this beautiful house with 205m<sup>2</sup> of living space, located in Rodange, just a few minutes from the station and 30 minutes from Luxembourg City. The property is composed as follows: First floor: Entrance hall 2 bedrooms Kitchen opening onto living/dining room Second floor: 2 bedrooms with terrace and bathroom Second floor: 1 bedroom The property also has a garage for 1 car, a utility room, a laundry room and a garden. Don't hesitate to contact us if you have a property for sale or rent! We are always on the lookout for apartments, houses and building plots to sell or rent to our existing clientele. Our valuations are free of charge. We are also available on Saturdays for visits, depending on the owners' availability. 27 77 00 78 or by e-mail [contact@housedream.lu](mailto:contact@housedream.lu) for more information a...

### ENERGY PASS

#### Energy class



### CHARACTERISTICS

Number of pieces : -  
Nb. chamber (s) : 6  
Area : 205m<sup>2</sup>  
Nb. of bathrooms : 1  
Equipped kitchen : Oui

#### Thermal insulation class

F

✓ House dream

📍 14/16 rue Michel Rodange L-2430

📞 27 77 00 78

✉ [contact@housedream.lu](mailto:contact@housedream.lu)

🌐 <https://www.housedream.lu/en/detail-1113>